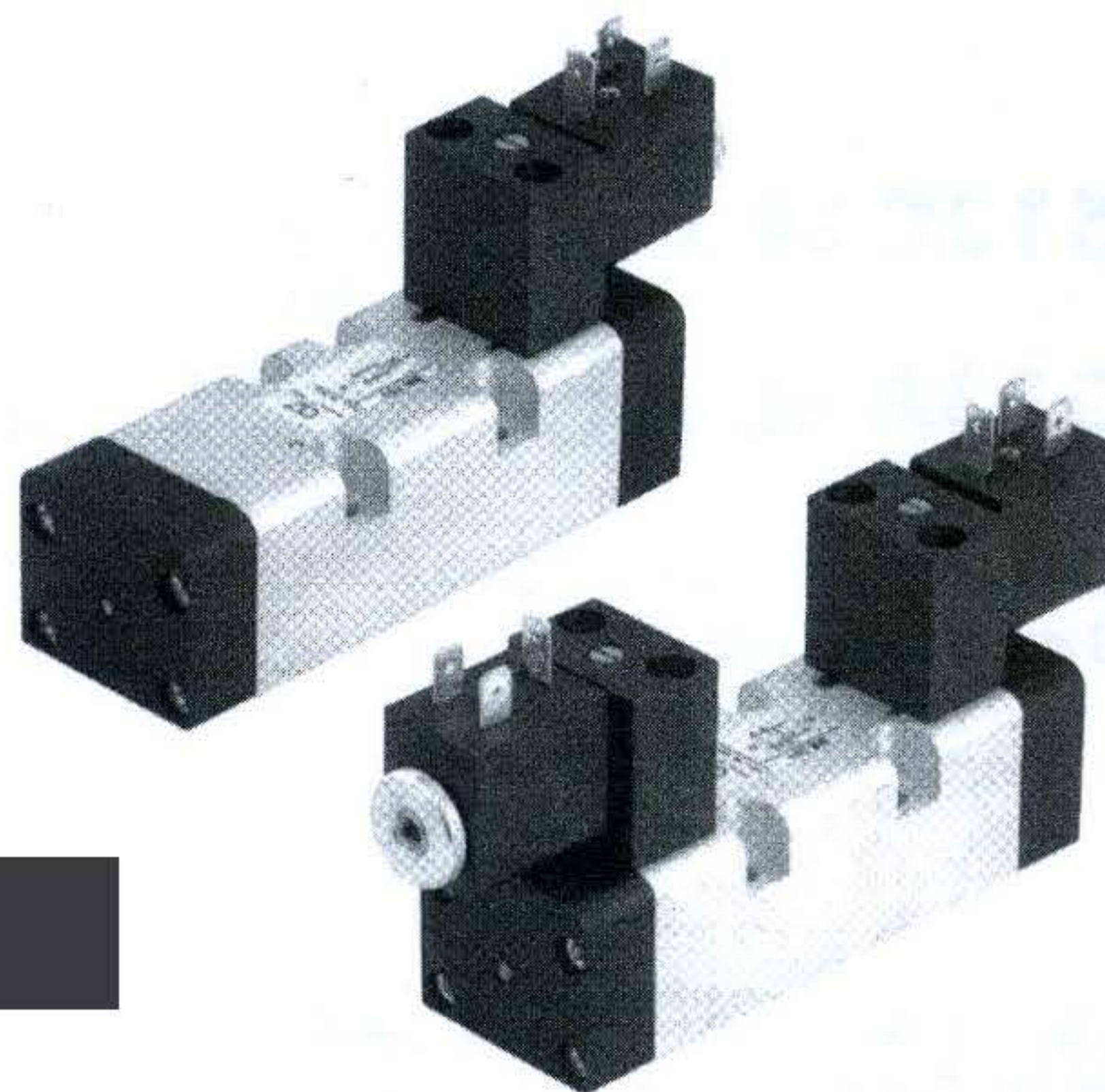
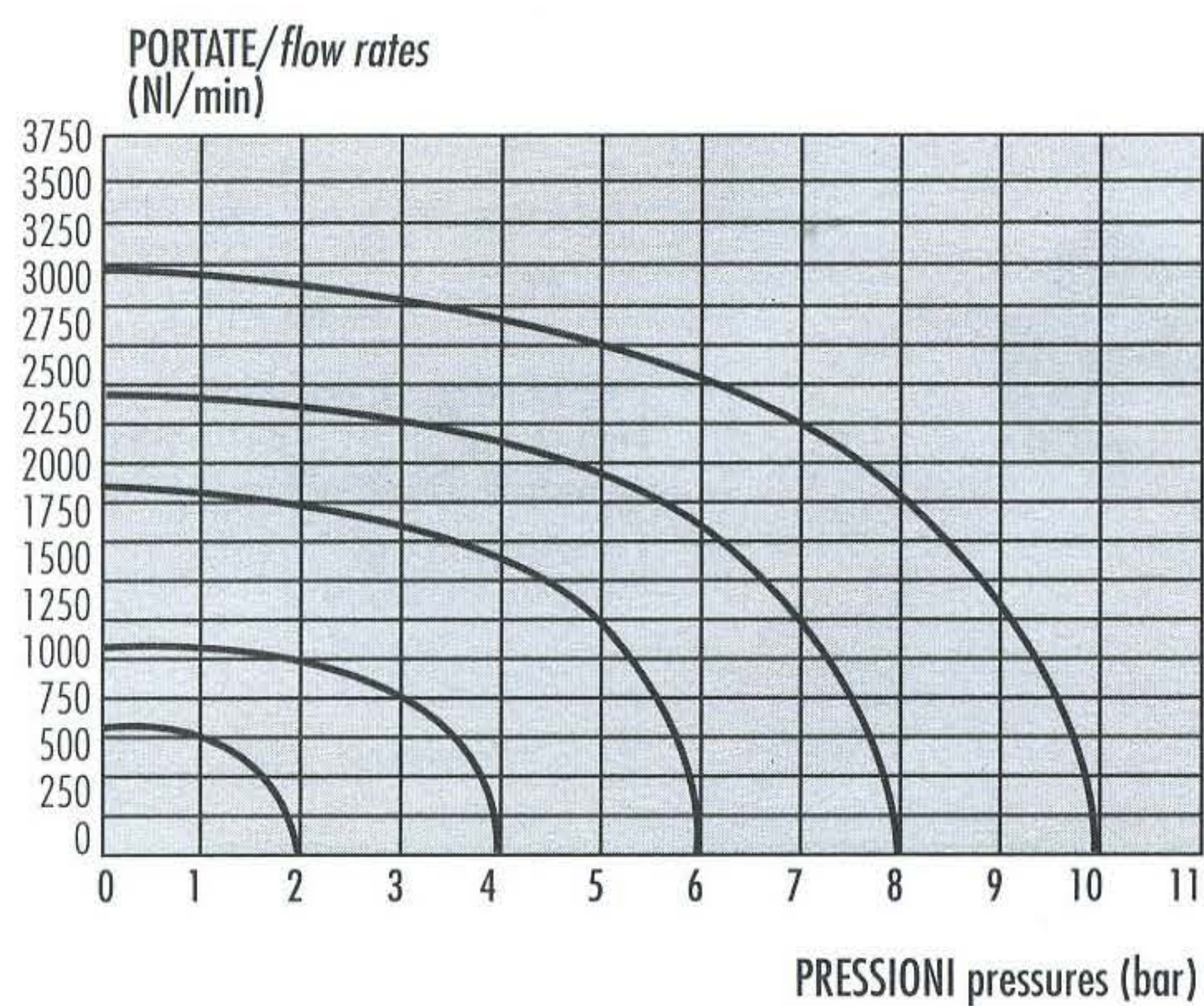


- Valvole a spola 5/2-5/3  
5/2-5/3 spool valves
- Montaggio su basi modulari o a posti fissi  
Installation on manifolds or multiple sub-bases
- Azionatore manuale bistabile sull'elettropilota  
Detented manual override on the solenoid pilot
- Riarmo manuale della valvola  
Manual reset



**Versione ATEX II 2GD cII T6  
su richiesta**



I prodotti di seguito indicati sono venduti senza bobine, da acquistarsi separatamente.

The following listed products are sold without coils, which are bought separately.

### Tempi di risposta - response times

	az. pneumatico pneumatic pilot	az. elettrico solenoid pilot
monostabile mono-stable	TRA (14): 12 ms TRR (12): 30 ms	TRA (14): 24 ms TRR (12): 50 ms
bistabile bi-stable	TRA (14): 20 ms TRR (12): 20 ms	TRA (14): 80 ms TRR (12): 80 ms

#### Materiali

**Corpo:** alluminio 11S  
**Molla:** INOX  
**Guarnizioni:** NBR  
**Spola:** alluminio nichelato  
**Parti interne:** ottone OT58

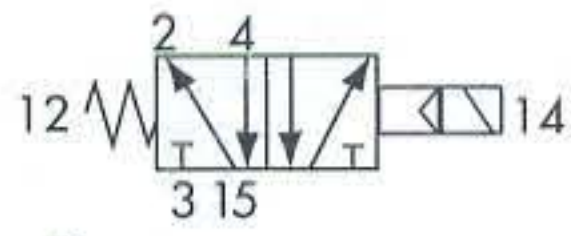
#### Materials

**Body:** aluminium 11S  
**Spring:** stainless steel  
**Seals:** NBR  
**Spool:** nikel plated aluminium  
**Internal parts:** brass OT58

Diametro nominale Nominal orifice	7.5 mm		
Temperatura di esercizio Temperature range	max + 60°C		
Pressione di esercizio Working pressure	al. interna monost. (monost. internal air supply)	al. interna bist. (bi-stable internal air supply)	alim. separata (separate air supply)
	2.5 ... 10 bar 0.25 ... 1 MPa	1 ... 10 bar 0.1 ... 1 MPa	max 10 bar max 1 MPa
Pressione di azionamento (per alimentazione separata) Actuating pressure (for separate air supply)	monostabile (mono-stable)		bistabile (bi-stable)
	2.5 ... 10 bar 0.25 ... 1 MPa		1 ... 10 bar 0.1 ... 1 MPa
Fluido Fluid	Aria filtrata 50µ con o senza lubrificazione 50µ filtered, lubricated or non lubricated air		

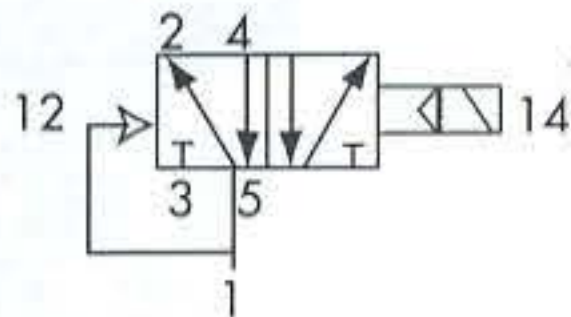
## 152 ME

5/2 comando elettrico - ritorno a molla  
5/2 solenoid pilot - spring return



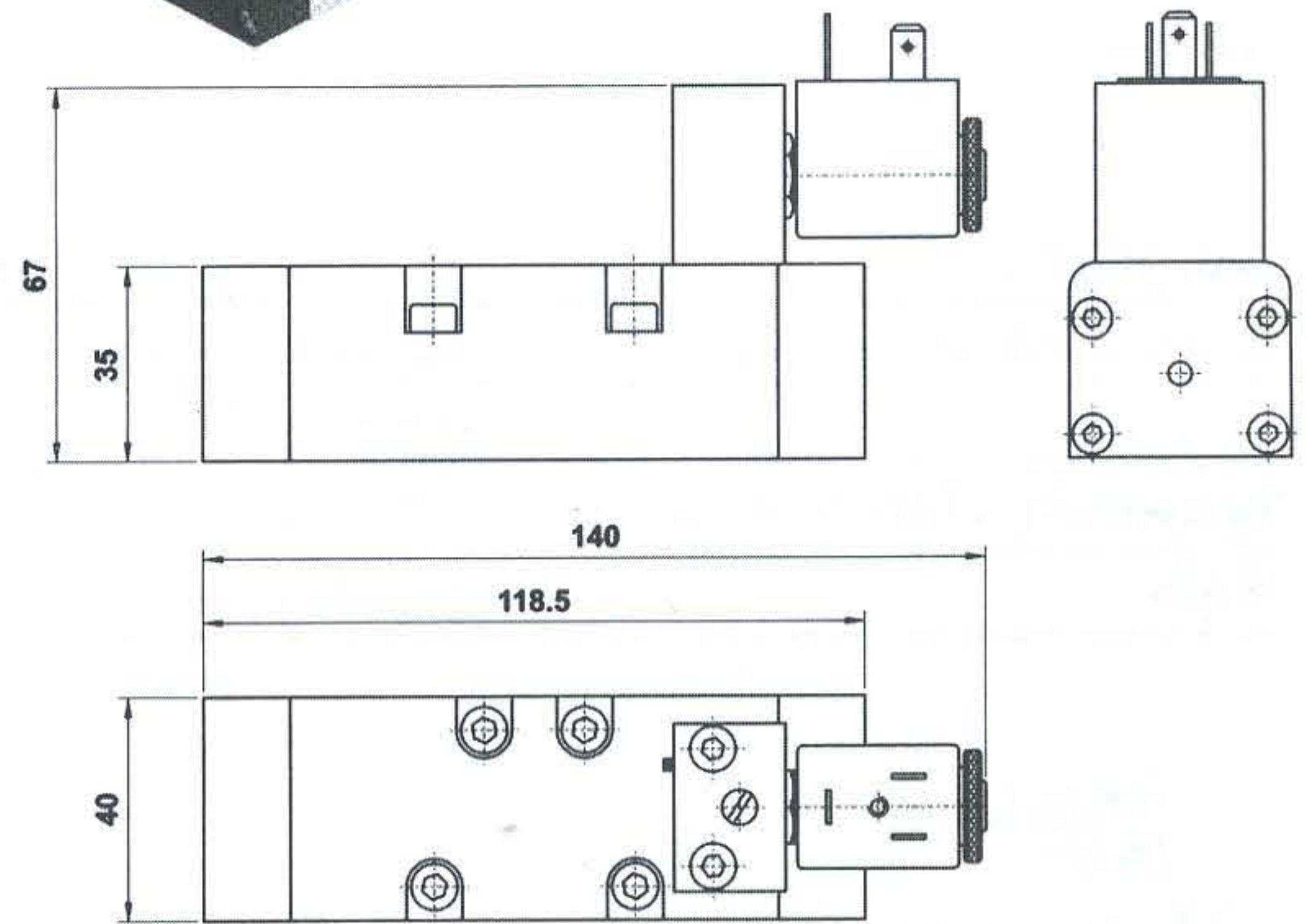
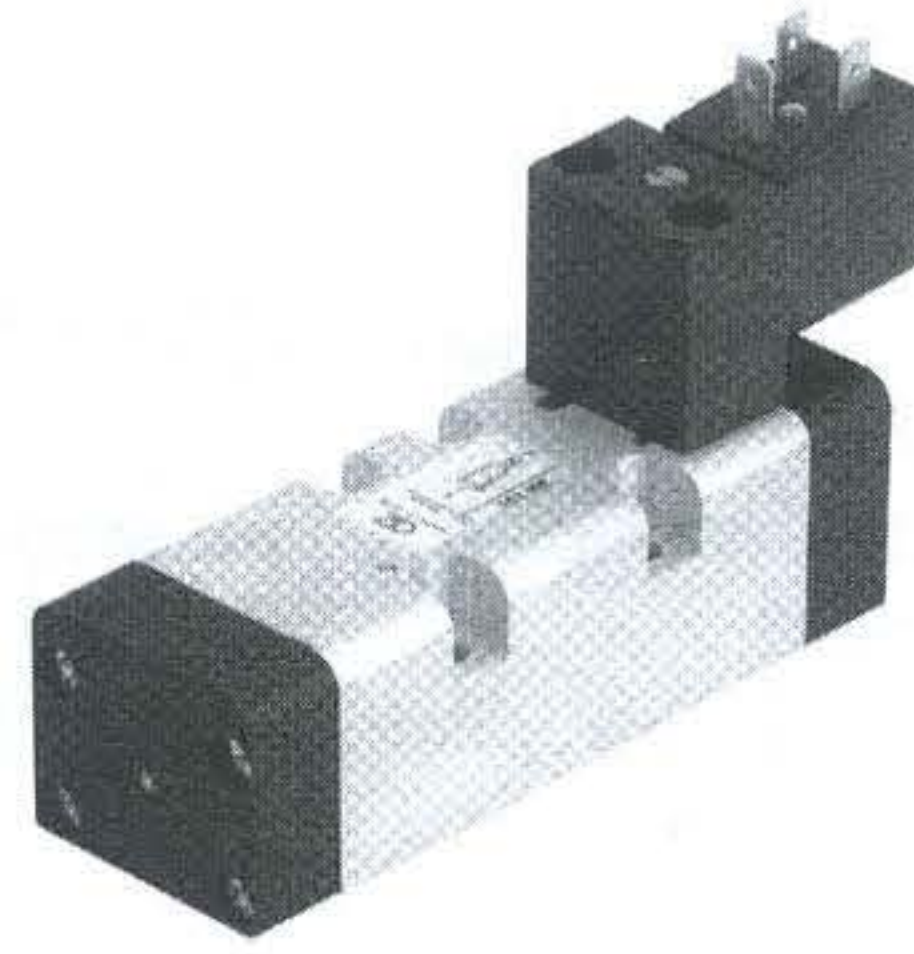
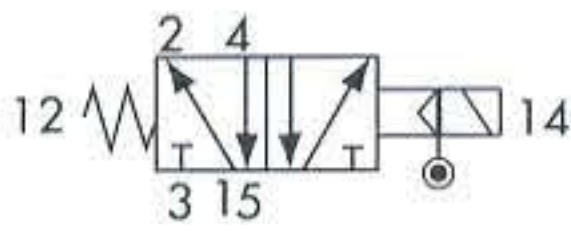
## 152 EFP

5/2 comando elettrico - ritorno a molla pneumatica  
5/2 solenoid pilot - pneumatic spring return



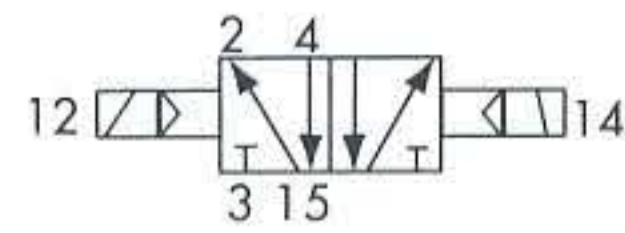
## 152 ME AS

5/2 comando elettrico alimentazione separata - ritorno a molla  
5/2 solenoid pilot with separate air supply - spring return



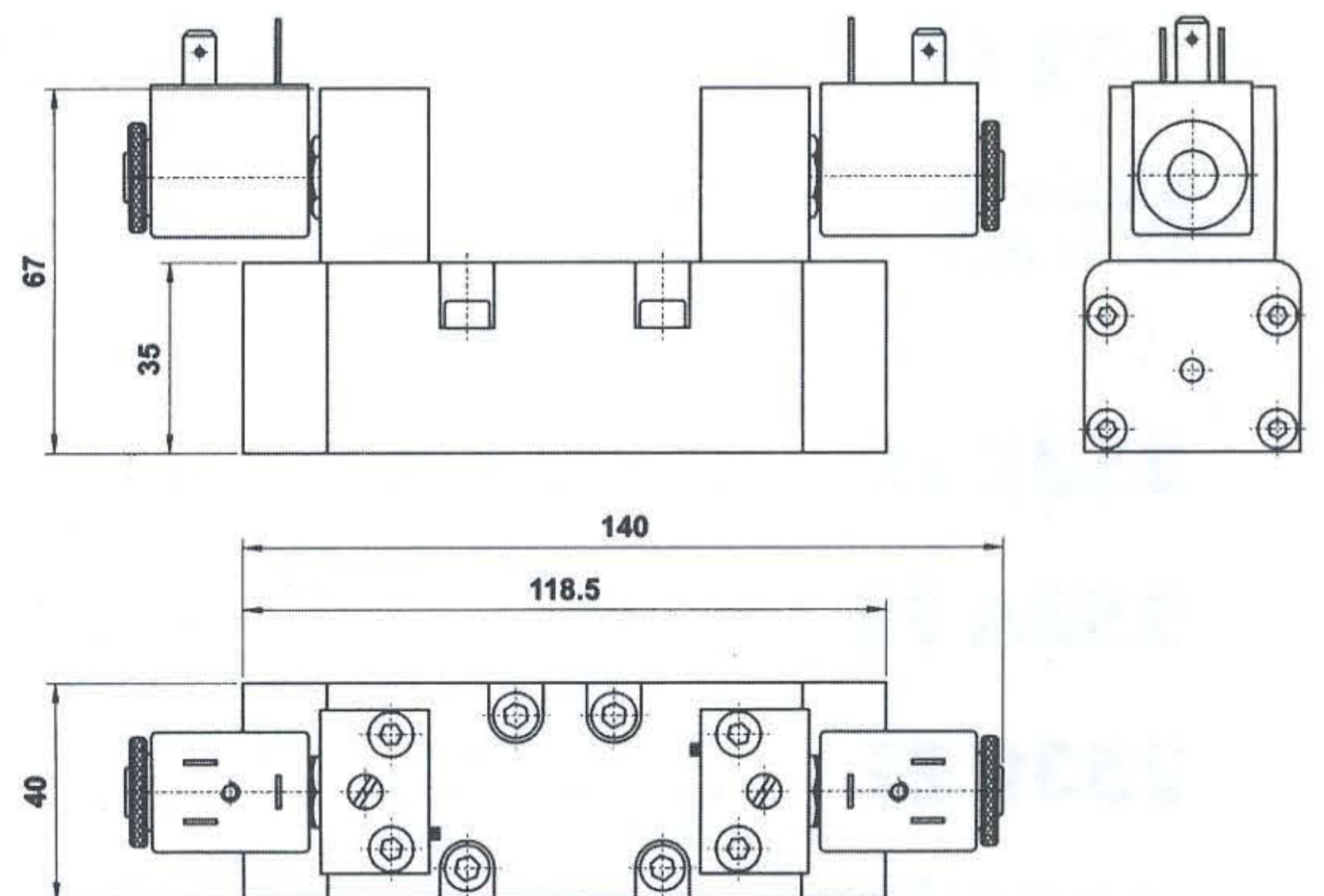
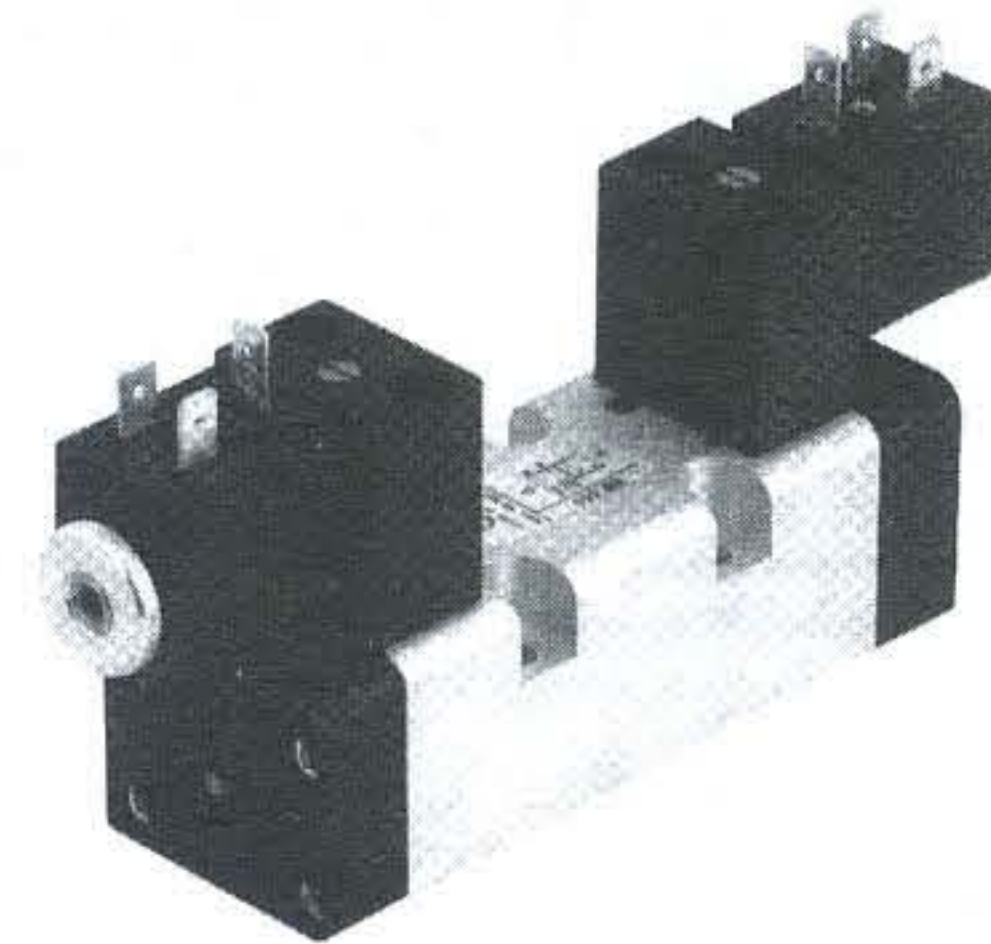
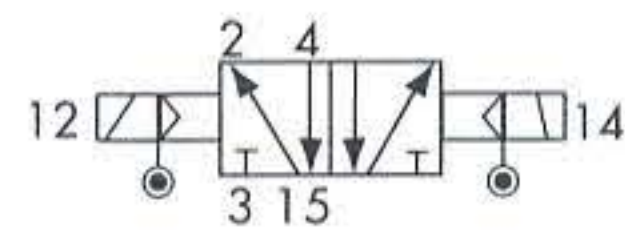
## 152 EE

5/2 doppio comando elettrico  
5/2 double solenoid pilot



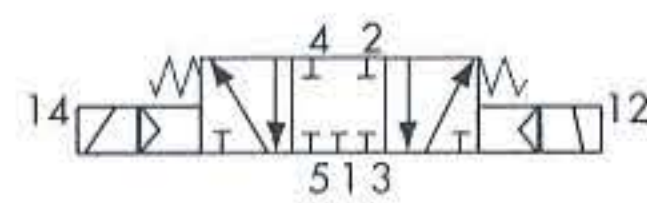
## 152 EE AS

5/2 doppio comando elettrico alimentazione separata  
5/2 double solenoid pilot with separate air supply



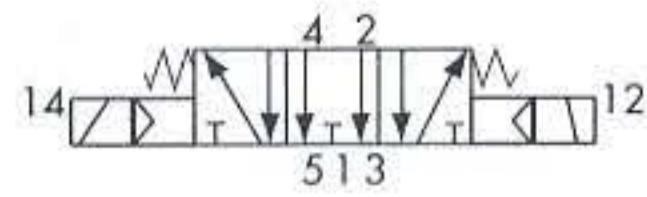
## 153C EE

centri chiusi  
closed centres



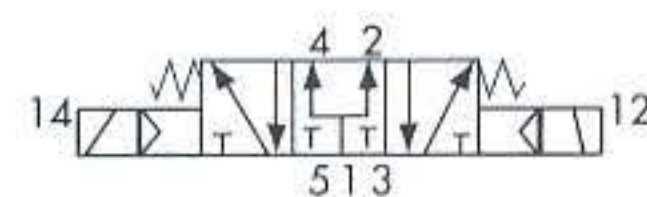
## 153A EE

centri aperti  
open centres



## 153P EE

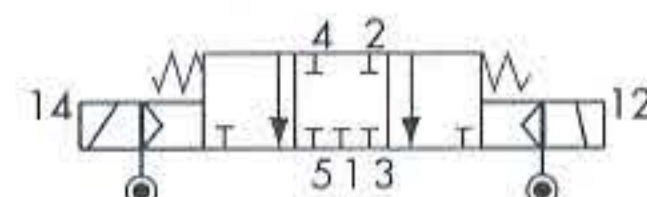
centri in pressione  
pressurized centres



5/3 doppio comando elettrico  
5/3 double solenoid pilot

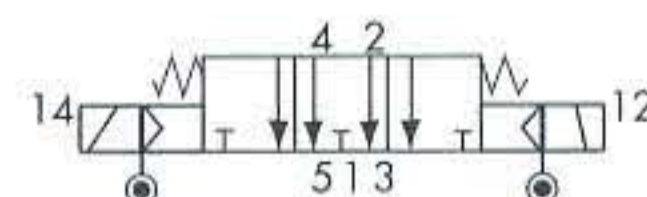
## 153C EE AS

centri chiusi  
closed centres



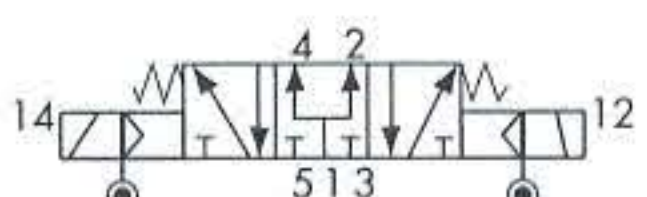
## 153A EE AS

centri aperti  
open centres



## 153P EE AS

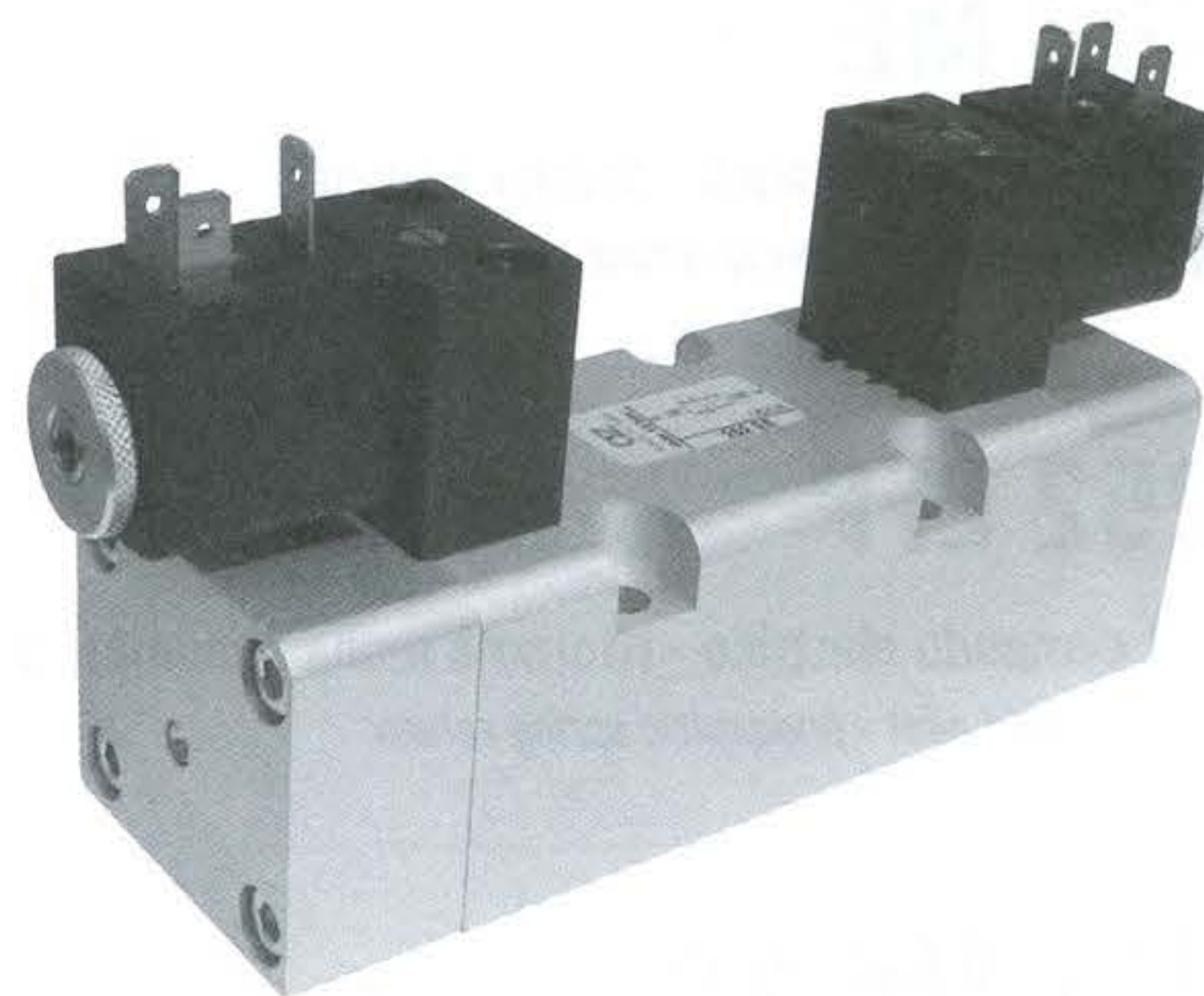
centri in pressione  
pressurized centres



5/3 doppio comando elettrico alimentazione separata  
5/3 double solenoid pilot with separate air supply

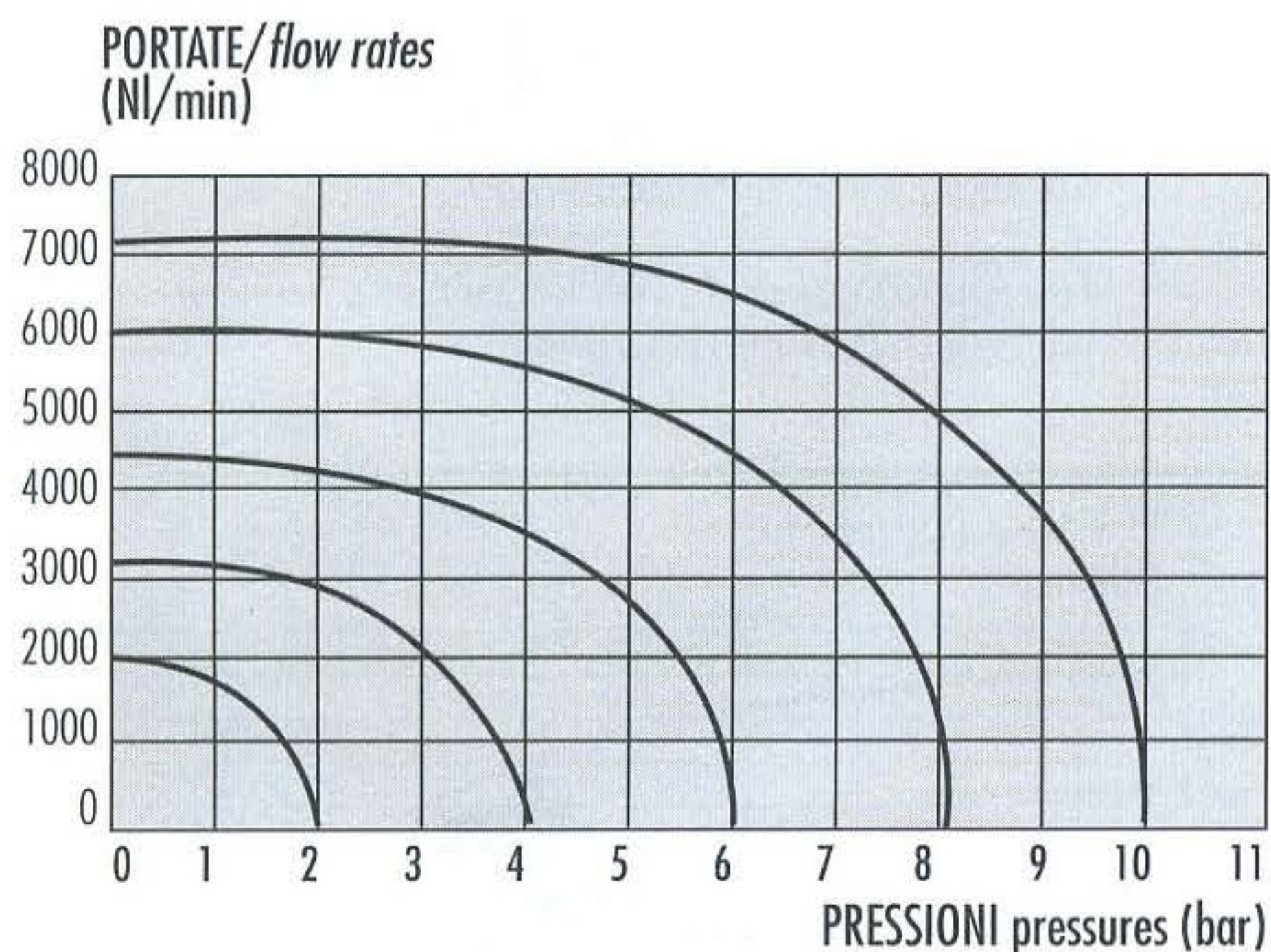
## CARATTERISTICHE:

- Elettrodistributori a spola 5/2 - 5/3 a norme 5599 - ISO 2
- Installazione in qualsiasi posizione
- Montaggio in linea, su collettori multipli o su basi manifold
- Versione multifunzione standard
- Comando manuale bistabile sull'elettropilota a norma CNOMO



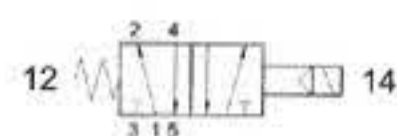
## DATI TECNICI:

Pressione di funzionamento	P	Monostabile: 2 ÷ 10 bar
		Bistabile: 1 ÷ 10 bar
Temperatura di funzionamento	Tf	-10 ÷ +60°C
Fluido	-	Aria filtrata con o senza lubrificazione



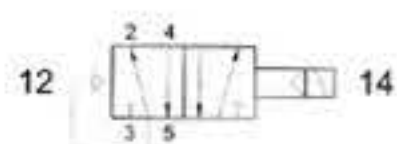
### 252 ME

5/2 comando elettrico - ritorno a molla  
5/2 solenoid pilot - spring return



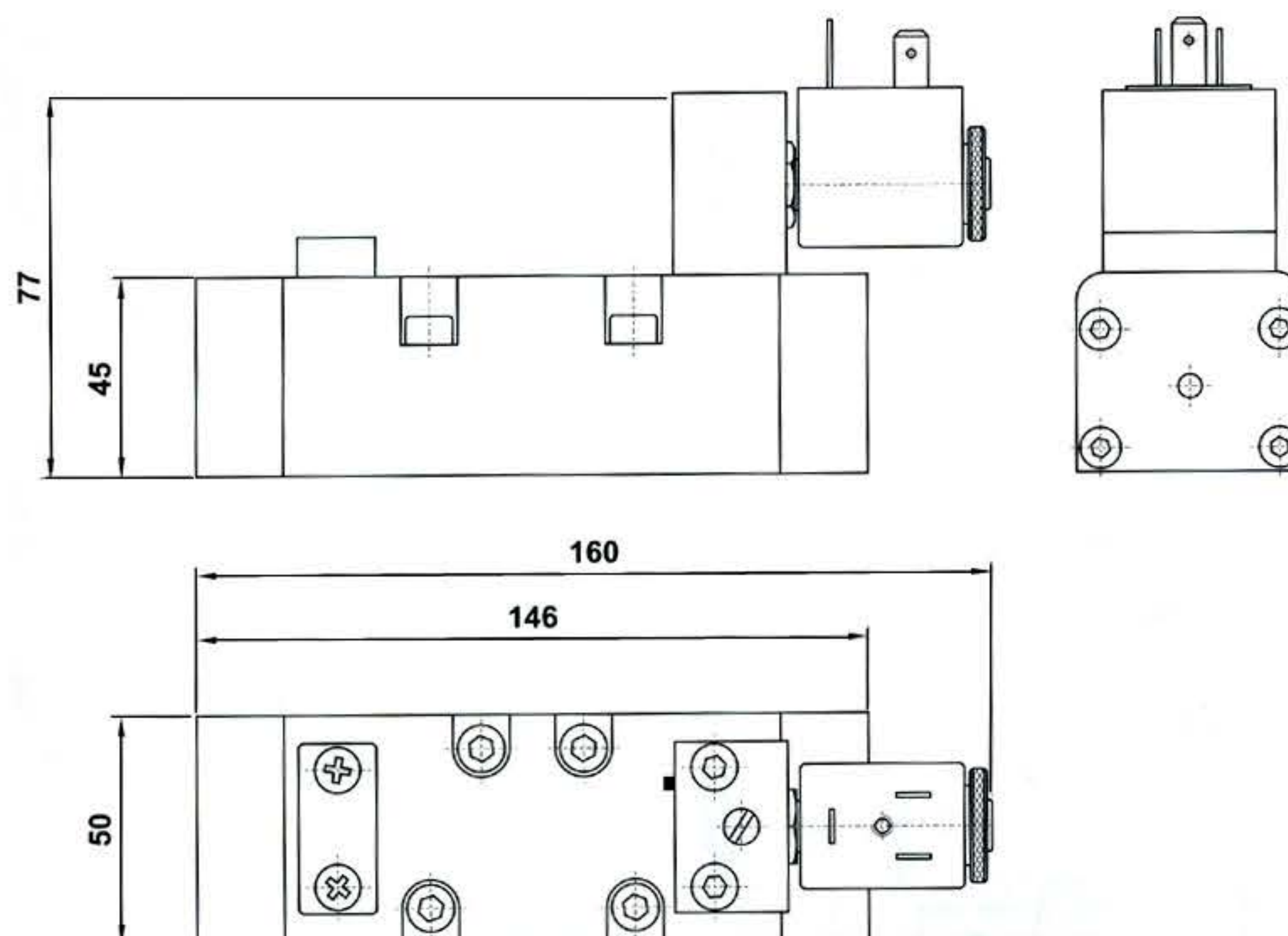
### 252 EFP

5/2 comando elettrico - ritorno a molla pneumatica  
5/2 solenoid pilot - pneumatic spring return



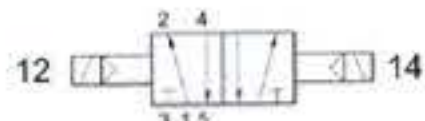
### 252 ME AS

5/2 comando elettrico alimentazione separata - ritorno a molla  
5/2 solenoid pilot with separate air supply - spring return



### 252 EE

5/2 doppio comando elettrico  
5/2 double solenoid pilot



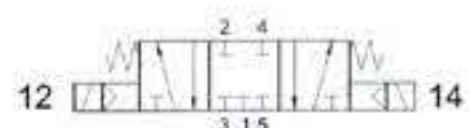
### 252 EE AS

5/2 doppio comando elettrico alimentazione separata  
5/2 double solenoid pilot with separate air supply



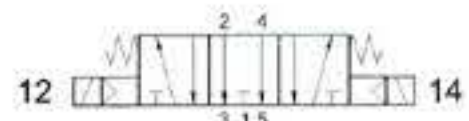
### 253C EE

centri chiusi  
closed centres



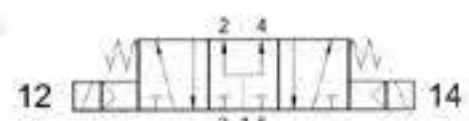
### 253A EE

centri aperti  
open centres

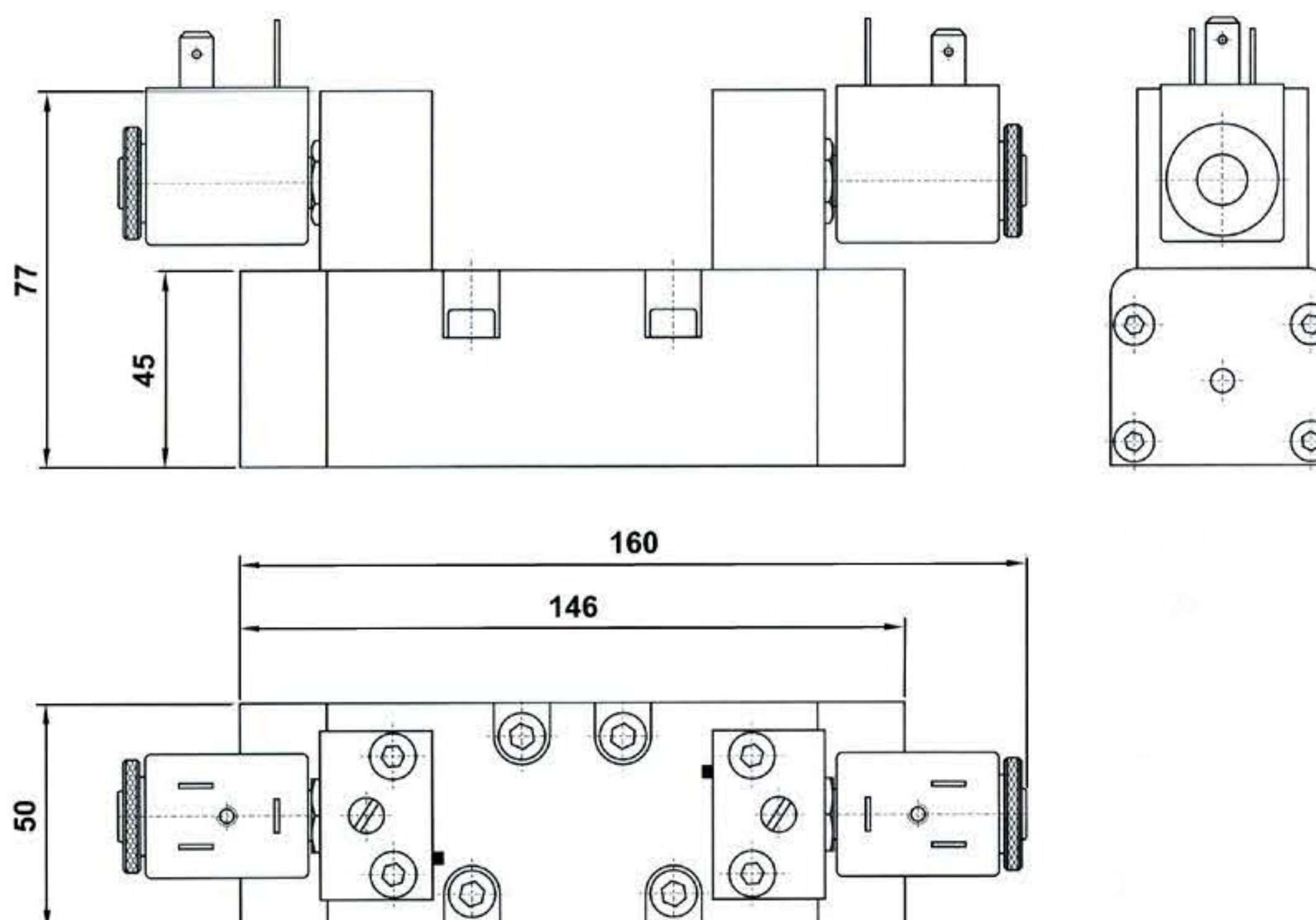


### 253P EE

centri in pressione  
pressurized centres

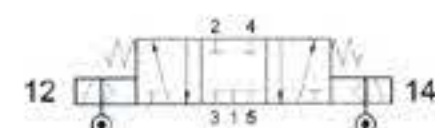


5/3 doppio comando elettrico  
5/3 double solenoid pilot



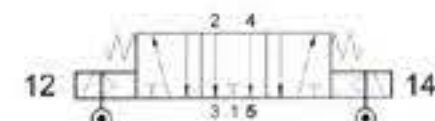
### 253C EE AS

centri chiusi  
closed centres



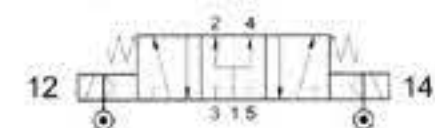
### 253A EE AS

centri aperti  
open centres



### 253P EE AS

centri in pressione  
pressurized centres



5/3 doppio comando elettrico alimentazione separata  
5/3 double solenoid pilot with separate air supply